

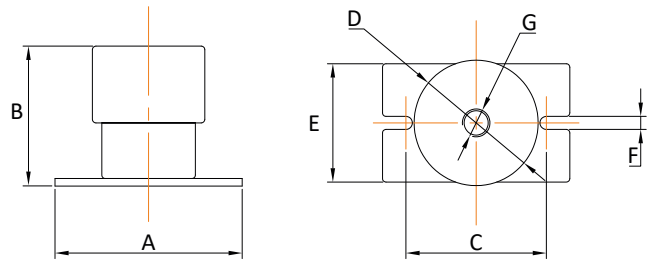
Housed Spring Mount

Product description

Steel spring in a house constructed for vibration isolation of machines at a speed of more than 450 rpm.

An oil-resistant and slip-resistant rubber sheet is adhered to the bottom of the mount in order to dampen the higher natural frequencies in the spring.

The mounts can also be ordered with springs with up to 50 mm deflection – call us if you would like to know more.



Application

Suitable for mounting in places where the spring must be protected from weathering. Used, for instance, in Genvex units, heat pumps, fans, air conditioners and cooling towers.

Assembly

Suitable for mounting in places where the spring must be protected from weathering. Used, for instance, in Genvex units, heat pumps, fans, air conditioners and cooling towers.

Type	A [mm]	B [mm]	c [mm]	D [mm]	E [mm]	F [mm]	G [mm]
ESS	75	70	59	55	40	10	M8
ESM	150	79	120	105	100	10	M12
ESL	230	82	200	175	150	12	M12
ESL-HD	230	132	200	175	150	12	M12



TYPE ESS



TYPE ESM



TYPE ESL og ESL-HD

