

Product Description

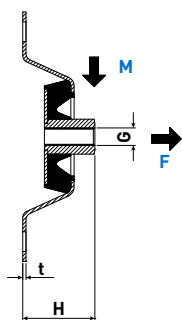
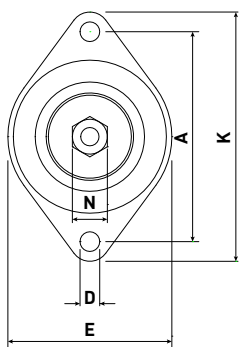
Vibration isolator with rubber vulcanised to galvanised steel plates. The VTOE is made as a captive type of mount that will still hold the equipment if the rubber should break or fail.

VTOE is used as the upper support when hanging electrical cabinets and other similar equipment on walls or from the ceiling. The VTN is used as the lower support for wall mounting and is not a captive type mount.

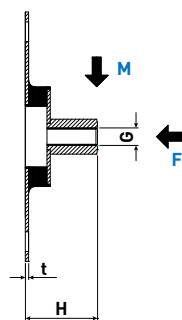
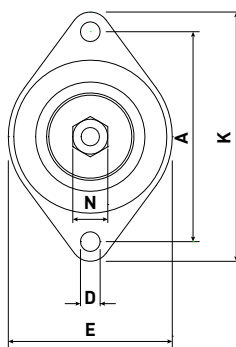
Model	M max (kg)		F max (kg)	
	40 Sh.	60 Sh.	40 Sh.	60 Sh.
VTOE Upper	14	25	30	70
VTN lower	14	25	30	70

Dimensions	A	D	E	G	H	K	N	t
VTOE Upper	96	9	75	M8	33	114	15	1.5
VTN Lower	96	9	75	M8	33	114	15	1.5

VTOE



VTN



Example

