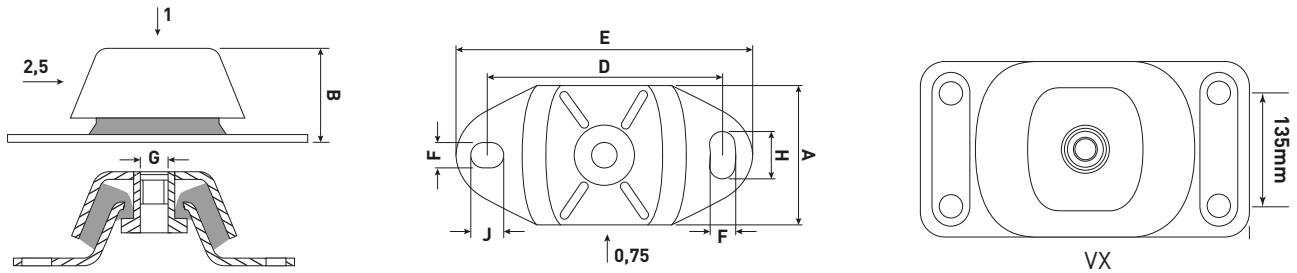


Product description

Marine mounts were originally developed for the installation of marine engines and are designed to absorb screw pressure. The mounts therefore have different stiffnesses in the three load directions in order to optimise the reduction of the vibrations of marine engines.

Application

Marine engines, ship-mounted installations, generators, mobile systems and the like.



Type	A [mm]	B [mm]	D [mm]	E [mm]	F [mm]	H [mm]	J [mm]	G
Marine VS	60	38.5	100	120	11	14	11	M12
Marine VM	75	50	140	183	13	30	20	M16
Marine VB	114	74	182	228	18	35	25	M20
Marine VX	190	112	270	330	18	18	18	M24

Type	Hardness 35 Sh(A)		Hardness 40 Sh(A)		Hardness 45 Sh(A)		Hardness 55 Sh(A)		Hardness 65 Sh(A)		Hardness 75 Sh(A)	
	Max. load [kg]	Deflection [mm]	Max. load [kg]	Deflection [mm]	Max. load [kg]	Deflection [mm]	Max. load [kg]	Deflection [mm]	Max. load [kg]	Deflection [mm]	Max. load [kg]	Deflection [mm]
Marine VS			40	4	50	4	75	4	90	4		
Marine VM	110	5			150	5	225	5	300	5	425	5
Marine VB			-	-	425	6	625	6	800	5	1000	5
Marine VX					1000	8	1300	8	2250	8	3000	8

