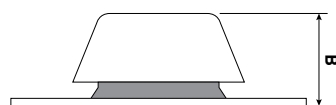
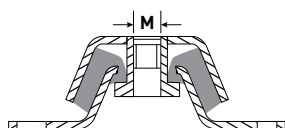
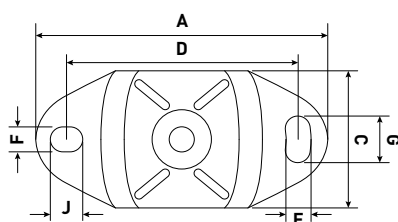


**Product Description**

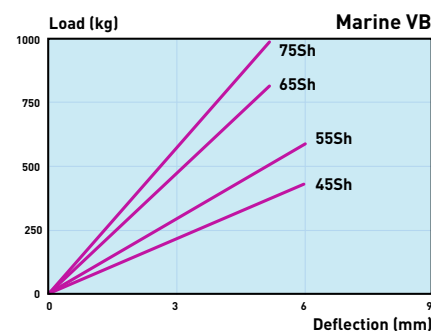
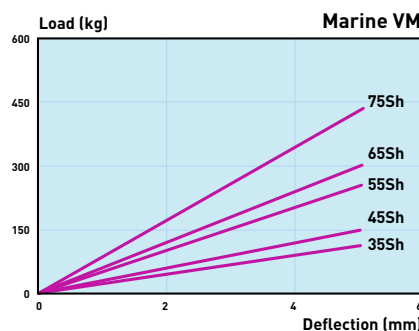
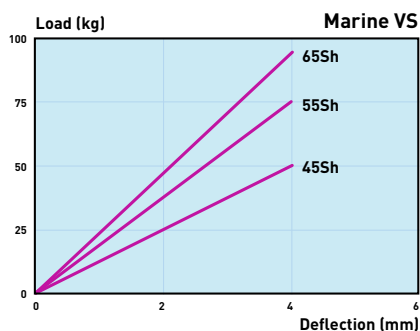
Marine mounts were originally designed for use with marine propulsion engines and are therefore failsafe to accommodate thrust. In recent years, marine mounts are popular across a wide range of industries, offering high performance, simple installation and a cost effective solution for reducing vibration. The mounts provide different stiffnesses in each direction, which provides optimum performance, particularly for internal combustion engines. These mounts can also be supplied with Lloyds Approval.

**Applications**

Marine propulsion engines, generator sets, diesel engines, vehicles, pumps, and compressors.



Type	A (mm)	B (mm)	C (mm)	D (mm)	F (mm)	G (mm)	J (mm)	M
Marine VS	120	38.5	60	100	11	14	11	M12
Marine VM	183	50	75	140	13	30	20	M16
Marine VB	228	74	114	182	18	35	25	M20



Graphs give the max compression load in relation to the individual rubber hardness's of 45 Sh., 55 Sh, etc.