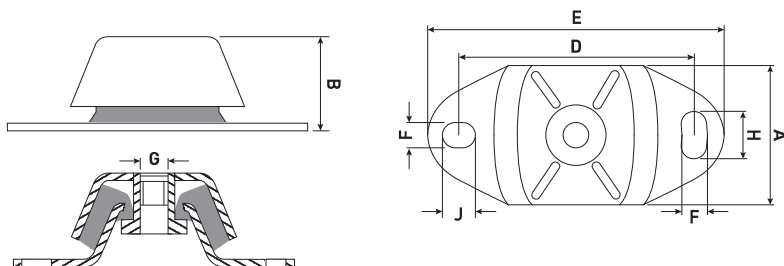


Produktbeskrivelse

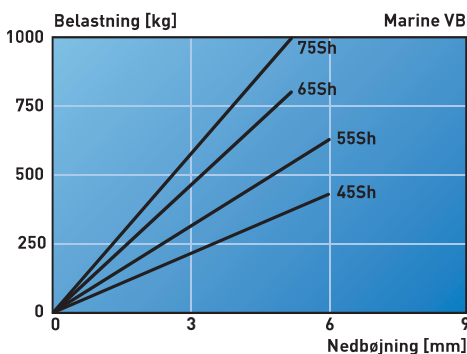
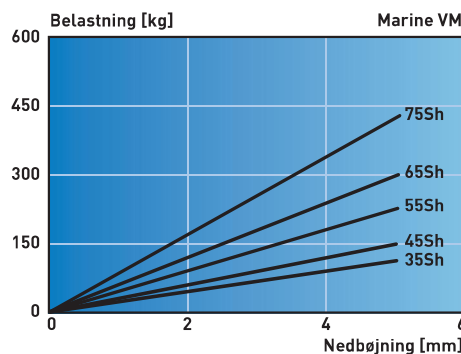
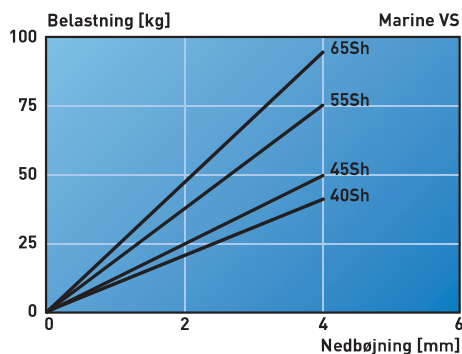
Marinedæmperne er oprindeligt udviklet til opstilling af små marinemotorer og er designet til at kunne optage skrue trykket. Derfor har dæmperne forskellig stivhed i de tre belastnings retninger, for at optimere reduktionen af vibrationerne fra små marinemotorer.

Anvendelse

Små marinemotorer, skibsmonteret anlæg, generatorer, mobile-anlæg oa.



| Type | A [mm] | B [mm] | D [mm] | E [mm] | F [mm] | H [mm] | J [mm] | G |
|-----------|--------|--------|--------|--------|--------|--------|--------|-----|
| Marine VS | 60 | 38.5 | 100 | 120 | 11 | 14 | 11 | M12 |
| Marine VM | 75 | 50 | 140 | 183 | 13 | 30 | 20 | M16 |
| Marine VB | 114 | 74 | 182 | 228 | 18 | 35 | 25 | M20 |



| Type | Hårdhed 35 Sh. | | Hårdhed 40 Sh. | | Hårdhed 45 Sh. | | Hårdhed 55 Sh. | | Hårdhed 65 Sh. | | Hårdhed 75 Sh. | |
|-----------|----------------------|-----------------|----------------------|-----------------|----------------------|-----------------|----------------------|-----------------|----------------------|-----------------|----------------------|-----------------|
| | Maks Belastning [kg] | Nedbøjning [mm] | Maks Belastning [kg] | Nedbøjning [mm] | Maks Belastning [kg] | Nedbøjning [mm] | Maks Belastning [kg] | Nedbøjning [mm] | Maks Belastning [kg] | Nedbøjning [mm] | Maks Belastning [kg] | Nedbøjning [mm] |
| Marine VS | | | 40 | 4 | 50 | 4 | 75 | 4 | 90 | 4 | | |
| Marine VM | 110 | 5 | | | 150 | 5 | 225 | 5 | 300 | 5 | 425 | 5 |
| Marine VB | | | - | - | 425 | 6 | 625 | 6 | 800 | 5 | 1000 | 5 |