

Product description

These secured mounts are compact, low-profile dampers. They are easy to install and mount. The dampers combine three-way motion control with relatively high deflection. In addition to acting as vibration dampers, they can also absorb shock and are specially designed for use in mobile equipment.

The main characteristic of these isolators is that the stiffness gradually increases with deflection, preventing sudden breakthrough.

The center bolt, which is mechanically connected to the top part, provides security against separation of the top and bottom.

Application

The dampers are available in natural rubber type NR with a temperature range from $-40\text{ }^{\circ}\text{C}$ to $+70\text{ }^{\circ}\text{C}$.

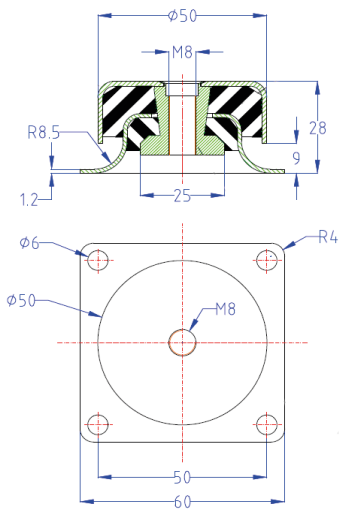
The dampers are also available in silicone rubber VMQ, which provides effective vibration damping and minimal transmission at resonant frequencies. Temperature range from $-60\text{ }^{\circ}\text{C}$ to $+250\text{ }^{\circ}\text{C}$.

The product is tailored to mobile and marine systems where high damping and stability are required. Has the same stiffness vertically and horizontally.

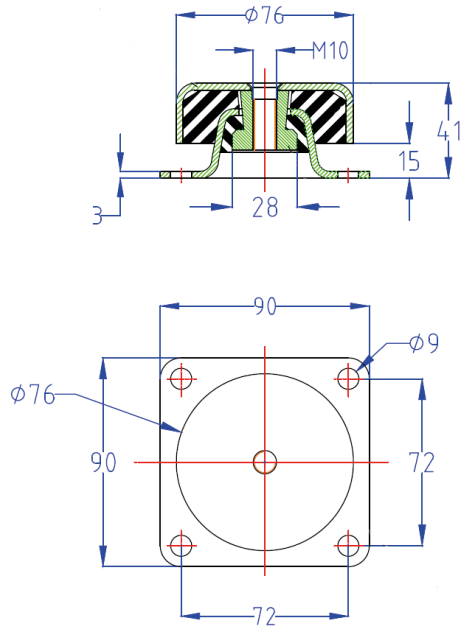


Type	Hardness 35 Sh(A)		Hardness 45 Sh(A)		Hardness 60 Sh(A)		Hardness 75 Sh(A)	
	Max. Load [kg]	Deflection [mm]	Max. Load [kg]	Deflection [mm]	Max. Load [kg]	Deflection [mm]	Max. Load [kg]	Deflection [mm]
SCM060-NR	35	3 ± 0.5	60	3 ± 0.5	125	3 ± 0.5	200	3 ± 0.5
SCM060-WMQ			75	3 ± 0.5	100	3 ± 0.5	150	3 ± 0.5
SCM120/125-NR			80	3.5 ± 0.5	200	3.5 ± 0.5	300	3.5 ± 0.5
SCM120/125-WMQ			80	3.5 ± 0.5	160	3.5 ± 0.5	250	3.5 ± 0.5
SCM220/225-NR	110	4.5 ± 0.5	170	4.5 ± 0.5	300	4.5 ± 0.5	450	4.5 ± 0.5
SCM220/225-WMQ			130	4.5 ± 0.5	220	4.5 ± 0.5	350	4.5 ± 0.5
SCM325-NR			120	4.5 ± 0.5	210	4.5 ± 0.5	330	4.5 ± 0.5
SCM325-WMQ			130	4.5 ± 0.5	220	4.5 ± 0.5	350	4.5 ± 0.5
SCM420/425-NR			350	6.5 ± 1.0	800	6.5 ± 1.0	1400	6.5 ± 1.0
SCM420/425-WMQ			350	6.5 ± 1.0	800	6.5 ± 1.0	1100	6.5 ± 1.0

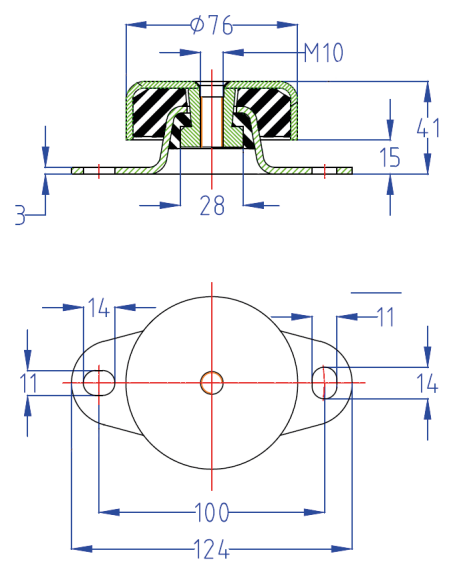
SCM060



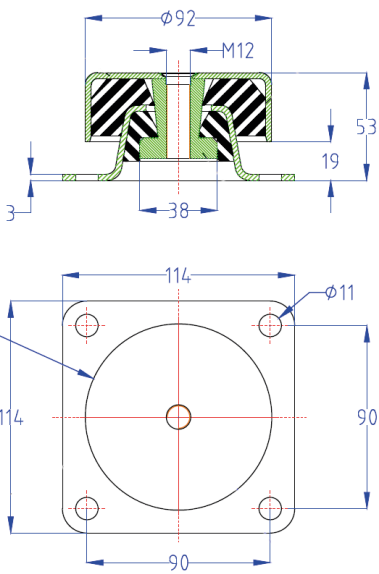
SCM120



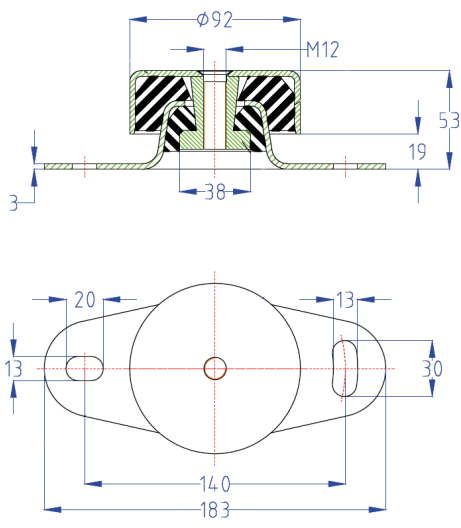
SCM125



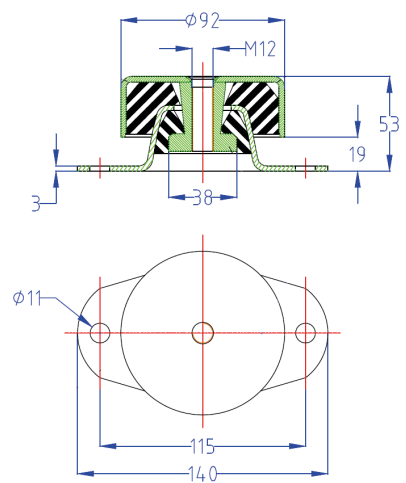
SCM220



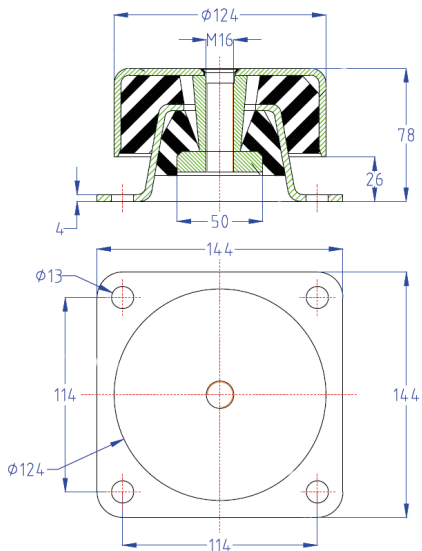
SCM225



SCM325



SCM420



SCM425

